

## BATTERY HANDLE REPLACEMENT

### Tools Needed:

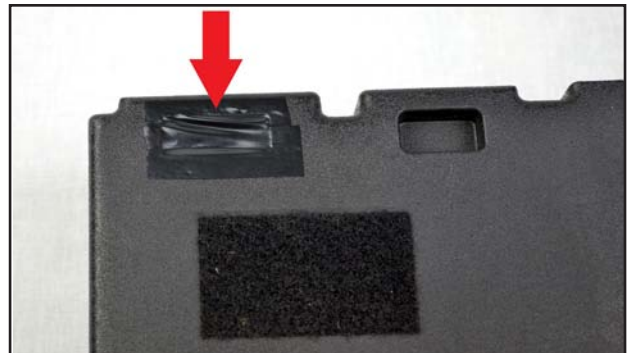
- Phillips screwdriver
- Needlenose pliers



**Step 2:** Unscrew the 8 screws (circled in red) to open the battery case.



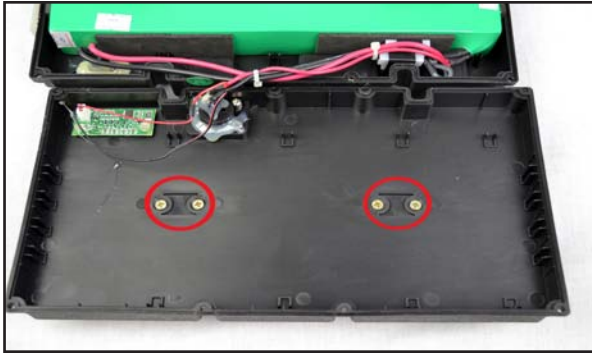
**Step 1:** Cover the battery connection port, circled in red, with tape before continuing with this procedure.



**Step 3 (Inside Battery Box):** Avoid touching the indicated areas with metal objects. This can short circuit and cause damage to the battery.



**Step 4:** Remove the 4 screws circled in red.



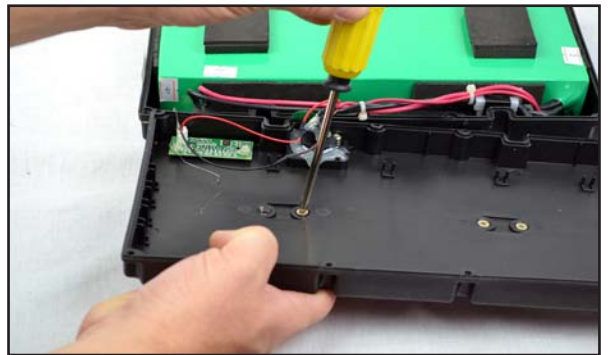
**Step 5:** Remove the battery handle.



**Step 6:** Install the replacement battery handle on top of the battery box cover.



**Step 7:** Align the handle mounting holes and insert the screws to attach the battery handle.



**Step 8:** Align the screw holes to install the battery cover and install the 8 screws and 8 nuts.



**Step 9:** Make sure battery is properly sealed and secured tightly. Remove tape from battery connection port.



**The End:** Congratulations, you have successfully replaced the battery handle!